

II 2G Ex db eb IIC T5/T4 Gb
II 2D Ex tb IIIC T135°C Db

REMATIC, DMS3,
24 V DC (2P)
(3P)
PROFIBUS DP V0/V1 MODBUS RTU.
: LED (RS-232).
a a
« - ».



DMS3

- 3x380 VAC
-
- T
- a
- 60 % 100 %
-
-
- 7 R1, R2, RE1...RE 5 (18)¹⁾
- 2 READY¹⁾
- - 0/4 - 20 mA, 4 - 12 mA, 12 - 20 mA 0/2 - 10 V¹⁾
- 24 V DC - , ,
- 24 V DC - , ,
-
- ESD ()
- - 4 - 20 mA a ()¹⁾
- 24 V DC, 100
-
- LED
-
- (, , .)
- RS 232
- : ISO 5210/F16- B3, C, D 55510 - ()
-
- IP 66
-
- PROFIBUS DP V0/V1,
- MODBUS RTU,
- ISO 5210 / F16- ()

1) Profibus Modbus.

MOR 5PA-Ex

168. x - x x x x x / x x

/	o	e	10)		
3.1		-20°C ... +60°C	C3	T4	1
			C4		2
2		-50°C ... +40°C	C3	T5	3
2		-20°C ... +60°C	C3	T4	6
1	-	-50°C ... +40°C	C4	T5	7

c	50 Hz	Y/D 400/230 V AC	Z501f; Z556f; Z557f; Z571d	2
		Y/D 380/220 V AC		N
		Y/D 400/230 V AC	Z501g; Z556g; Z557g; Z571e	E
		Y/D 380/220 V AC		F

31)	32)		33)	3x400 (380) V, 50Hz				35)
	«	»						
500 Nm	300 Nm	200 Nm	15 min ⁻¹	1.5 kW	710 min ⁻¹	4.15 A	C	
			20 min ⁻¹	2.2 kW	960 min ⁻¹	5.2 A	F	
			40 min ⁻¹	3.0 kW	1 415 min ⁻¹	6.6 A	J	
			60 min ⁻¹	4.0 kW	1 435 min ⁻¹	8.1 A	M	
630 Nm	380 Nm	250 Nm	15 min ⁻¹	1.5 kW	710 min ⁻¹	4.15 A	B	
			20 min ⁻¹	2.2 kW	960 min ⁻¹	5.2 A	E	
			40 min ⁻¹	3.0 kW	1 415 min ⁻¹	6.6 A	H	
			60 min ⁻¹	4.0 kW	1 435 min ⁻¹	8.1 A	L	
1 000 Nm	600 Nm	400 Nm	15 min ⁻¹	5.0 kW	1 420 min ⁻¹	11.1 A	P	
			20 min ⁻¹	1.5 kW	710 min ⁻¹	4.15 A	A	
			40 min ⁻¹	2.2 kW	960 min ⁻¹	5.2 A	D	
			60 min ⁻¹	3.0 kW	1 415 min ⁻¹	6.6 A	G	
				4.0 kW	1 435 min ⁻¹	8.1 A	K	

20	1 - 800			H
	1 - 800	LCD	41)	Z473a 42)

DMS3	2P	24 V DC				Z557f; Z557g	F
	3P/2P	0/4 - 20 mA	24 V DC		4 - 20 mA	Z501f; Z501g	G
		0/2 - 10 V				Z556f; Z556g	H
DMS3 M1	/ 2P	MODBUS RTU		24 V DC		Z571d; Z571e	M
DMS3 M2			N				
DMS3 P1			P				
DMS3 P2			R				

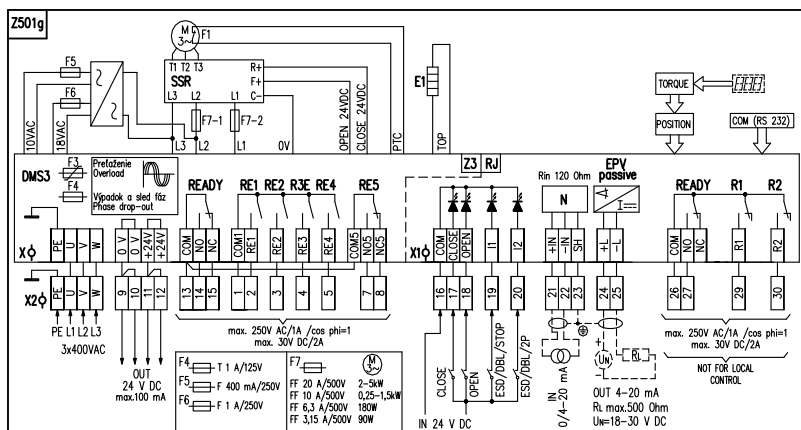
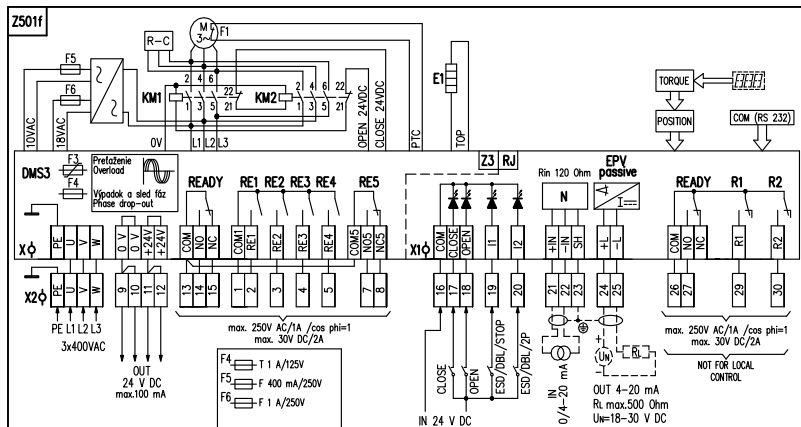
ISO 5210	F16	B3	Ø40	P-2133C	P-1424/B	B
		C	24/Ø55/Ø80		P-1424/C	C
		D	Ø40		P-1424/D	D
55510	Ø220/4xM20	B	Ø70/Ø85 - 5 35°/37°		P-1425/1	G
ISO 5210	F16 61)	A	Max. TR52		P-1424/A	A

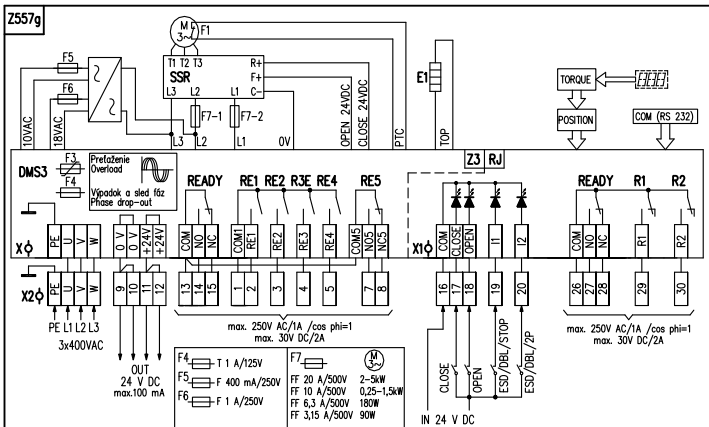
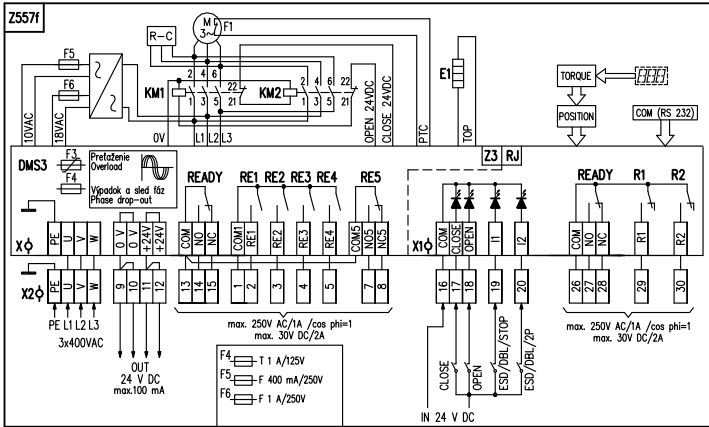
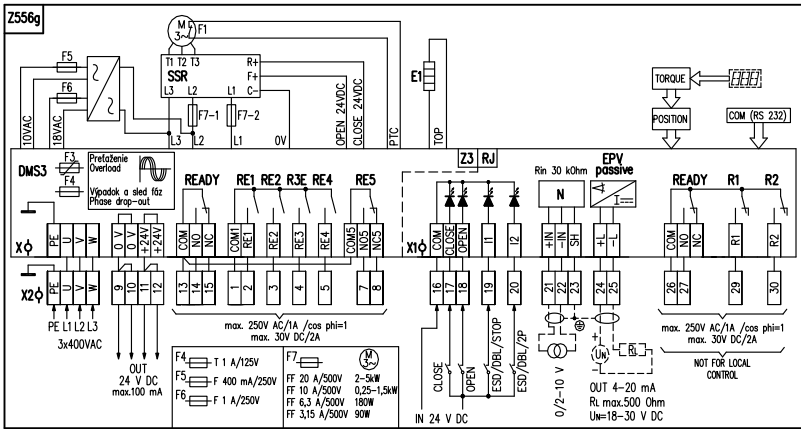
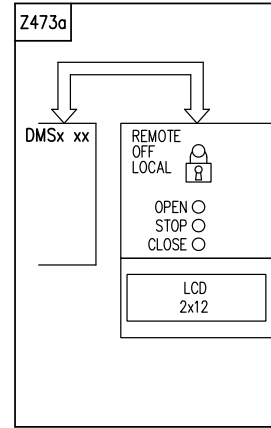
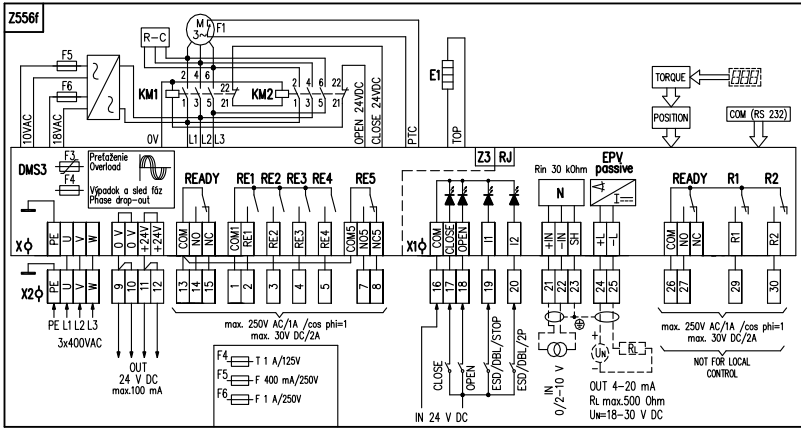
MOR 5PA-Ex

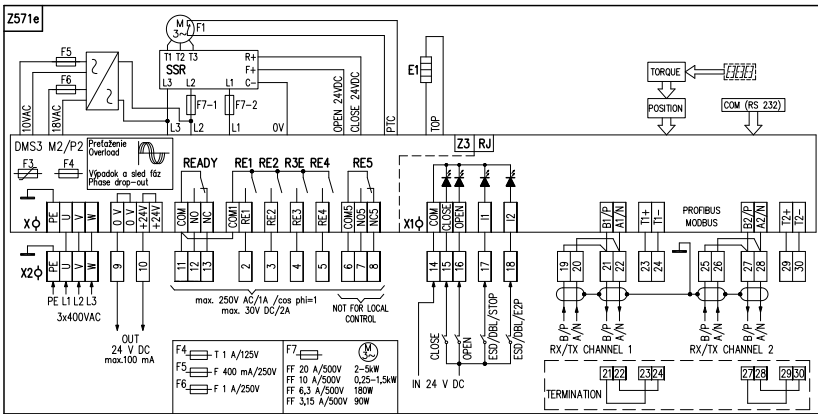
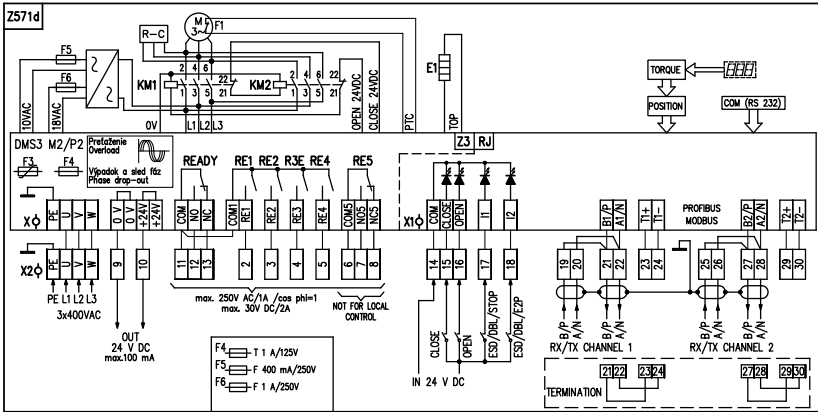
		168.	x	-	x	x	x	x	x	x	/	x	x
/												↓	↓
na 20												0	0
A												0	1
B												0	3
: A+B=20													
DB-9F/RJ45 DMS3										224 A80 100			

- 10) ISO 9223 / EN ISO 12944-2.
- 31) 60 100 %.
- 32) S2-10 min a S4-25%
- 33) S4-25% 90 1200
- 35) 3x400 VAC.
- 41) LCD -40°C
- 42) READY, R1, R2 Modbus/Profibus
- 61) F16-A .700 RE5.

MOR 5PA-Ex







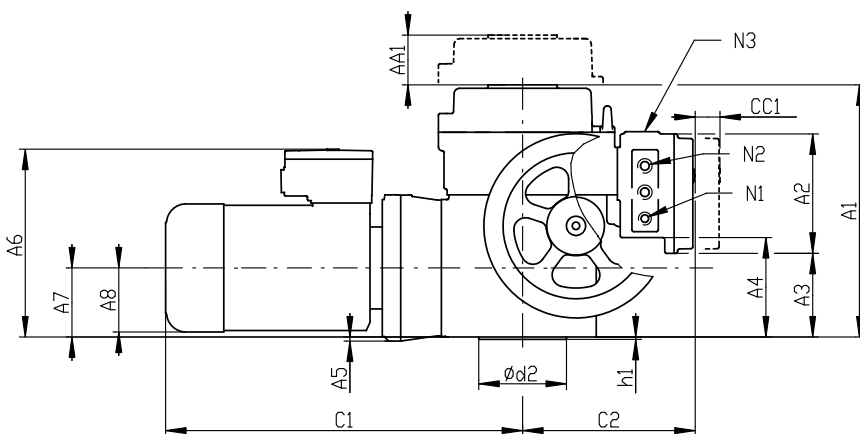
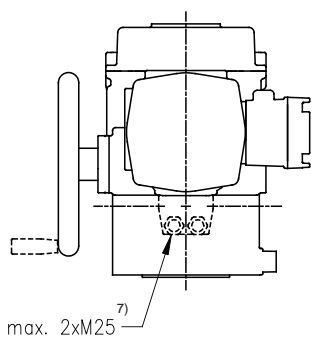
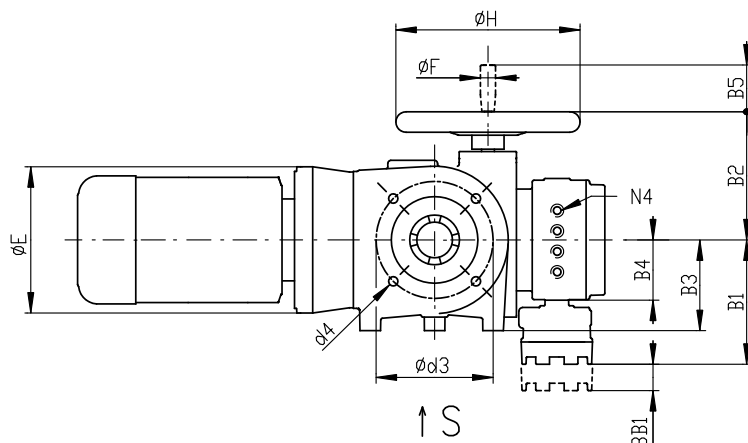
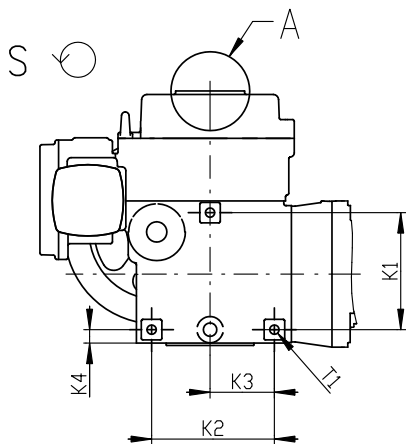
-	:	34,
-	,ma	0,08 2,5 2,
-	:	6,5 9,5 ,
-	:	9 13 ,
-	:	6,5 9,5 ,
-	:	2,5 6

PE, U, V, W	(0,05 - 2,5 mm ²)	(3x400 / 3x380 V AC, 50 Hz
0 V, +24 V2	24 V DC (100 mA)
COM, CLOSE OPEN, I1, I2 ...	(0,05 - 1 mm ²)	24 V DC
+IN, -IN, SH.....	(0,05 - 1 mm ²)	0/4-20 mA
+L, -L	(0,05 - 1 mm ²)	() 4-20 mA
COM, NO, NC	(0,05 - 1,5 mm ²)	READY ()
R1, R2.....	(0,05 - 1,5 mm ²)	R1, R2 ()
COM, NO, NC	(0,05 - 1,5 mm ²)	READY ()
COM1, RE1, RE2, RE3, RE4 ...	(0,05 - 1,5 mm ²)	RE1 RE4 ()
COM5, NO, NC.....	(0,05 - 1,5 mm ²)	RE5 ()

READY R 1 R 2 READY R1 R2

Z473.....	:	o o
Z501f.....	:	0/4 - 20 mA c
Z501g.....	:	0/4 - 20 mA c
Z556f.....	:	0/2 - 10 V c
Z556g.....	:	0/2 - 10 V c
Z557f.....	:	
Z557g.....	:	
Z571d.....	:	MODBUS / PROFIBUS c
Z571e.....	:	MODBUS / PROFIBUS c

MOR 5PA-Ex



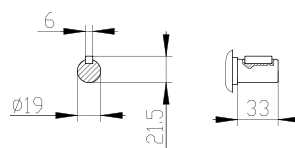
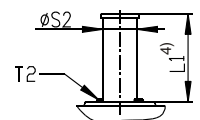
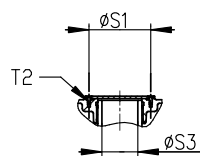
- 1) M
- 2) M
- 3))
- 4) L1 -
- 5) M
- 7))

Profibus/Modbus.

MO 5-Ex, MO 5PA-Ex

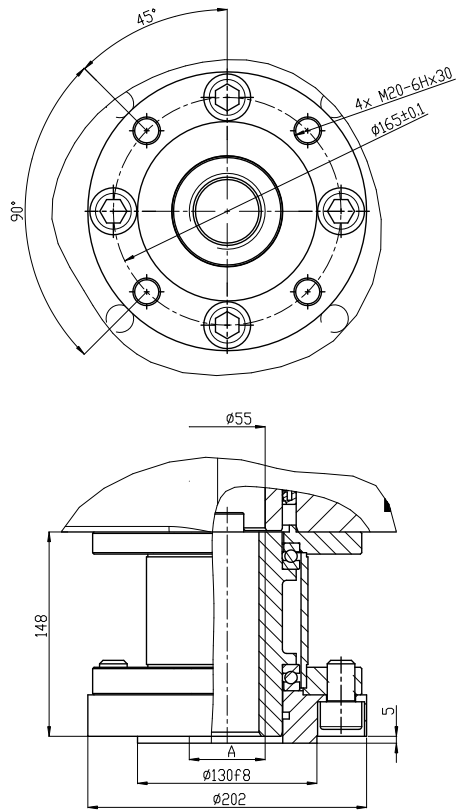
A

Rozměry (Dimensions)		Rozměry (Dimensions)	
A1	431	C2	295
AA1 min. ⁵⁾	600	ØE max.	250
A2	204	ØF	22
A3	143	ØH	315
A4	170	K1	200
A5 max.	7	K2	210
A6 max.	314	K3	110
A7	118	K4	23
A8 max.	111	L	-
B1	213	N1	M16x1.5
BB1 min. ¹⁾	600	N2	2x M25x1.5
B2	219	N3	M20x1.5
B3 max.	155	N4 ³⁾	4x M16x1.5
B4	103	S1	105
B5	90	S2	88.9x6.3
C1 max.	583	S3	70
Cc1 min. ²⁾	600	T1	3x M16-34
Flange	ISO	T2	3x M5-10
d2	130		
d3	165		
d4	4x M20		
h1	4		



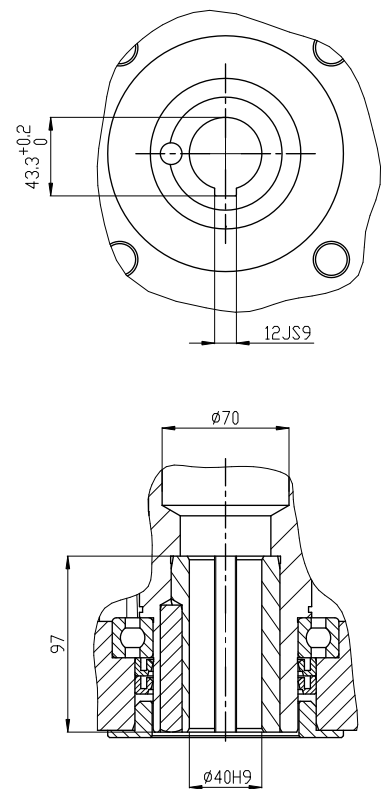
P-2133c

A



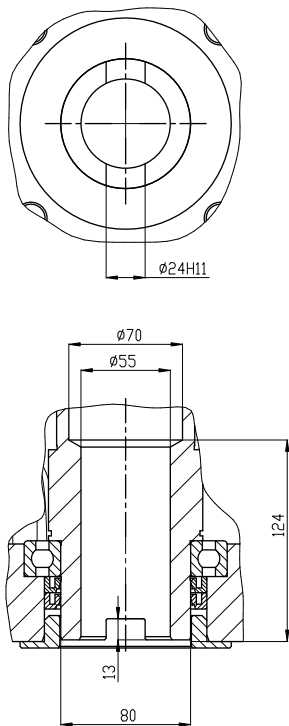
P-1424/A

B3



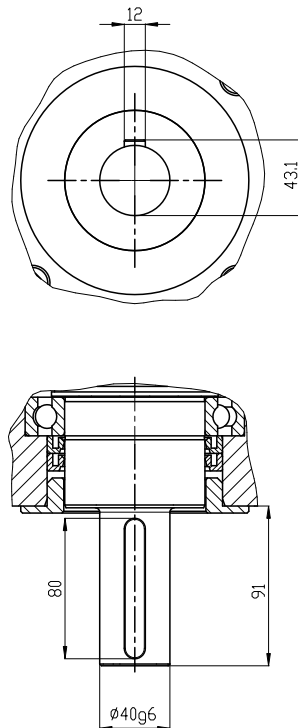
P-1424/B

C



P-1424/C

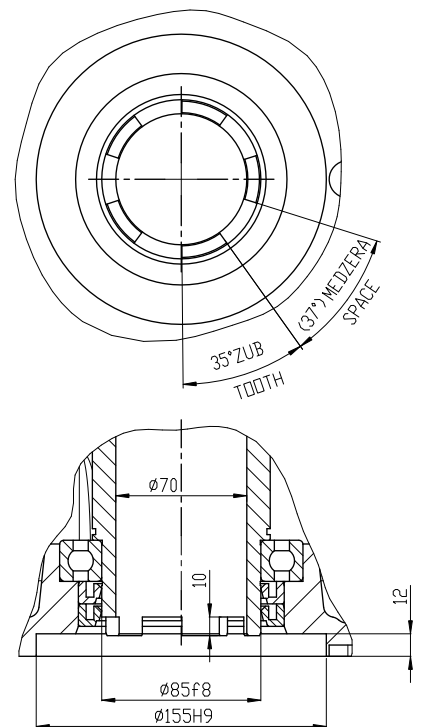
D



P-1424/D

5

55510



P-1425/1