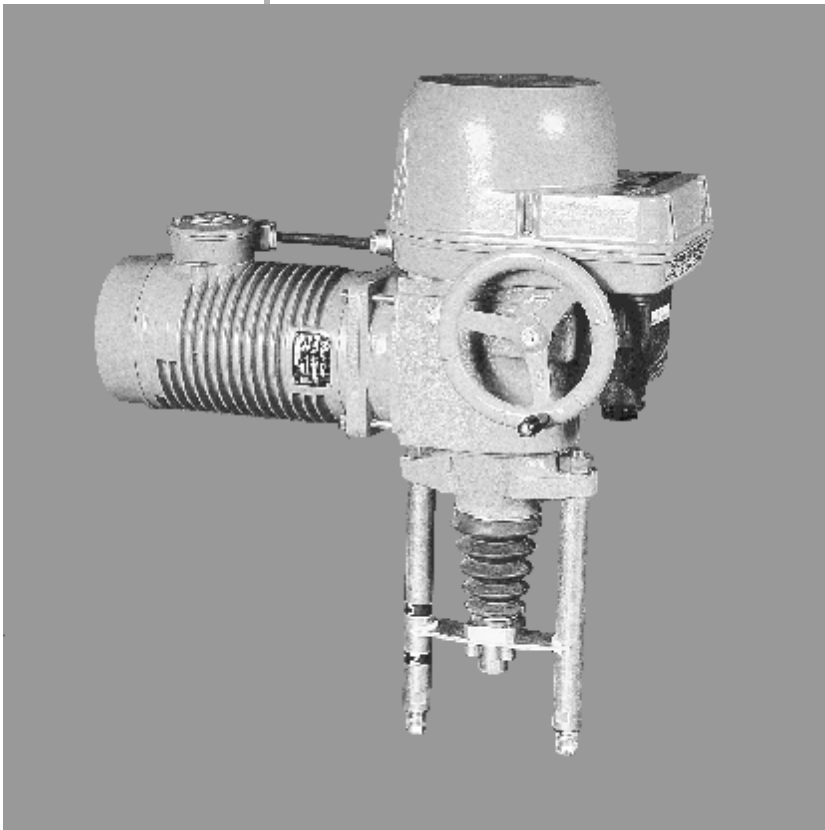




INSTALLATION, SERVICE AND MAINTENANCE INSTRUCTIONS



Electric linear thrust actuators MTR VARIANT 52 420

*Please read these instructions carefully before mounting and operating
the actuator.*

Contents

1. Description.....	2
1.1 Purpose and Operation	2
1.2 Safety instructions	2
1.3 Warranty conditions.....	2
1.4 Under-guarantee and after-guarantee service	3
1.5 Operation conditions	3
1.6 Basic Specifications	3
1.7 Description of the actuator	5
1.8 Technical data of actuator	9
1.9 Packing, transport, storing and unpacking	10
1.10 Product and package liquidation.....	11
2. Installation and dismantling of actuator	12
2.1 Installation	12
2.1.1 Mechanical connection EA on the valve.....	12
2.1.2 Electric connection and checking of function.....	13
2.2 Dismantling.....	14
3. Adjusting of actuator.....	14
3.1 Adjustment of stroke.....	14
3.2 Adjustment of position unit (Fig.4)	14
3.3 Transmitter unit adjustment	15
3.3.1 Adjustment of resistive transmitter unit.....	15
3.3.2 Adjustment of capacitive transmitter unit.....	15
3.3.3 Torque unit adjustment (Fig.7)	15
4. Service, maintenance and troubleshooting.....	15
4.1 Service	15
4.2 Maintenance - extent and periodicity	16
4.3 Troubleshooting.....	16
5. Enclosures.....	17
5.1 Wiring Diagrams.....	17
5.2 Dimensional Drawings	18

1. Description

1.1 Purpose and Operation

Electric linear actuators (hereinafter **EA**) of **MTR 52 420** (hereinafter **MTR**) types are high-powered electric-mechanical products designed for direct installations onto controlled devices (regulating bodies - valves, etc.). EA of MTR types are provided for remote control of closing bodies, and EA of MTR types for automotive control of regulating bodies in both directions of their movement. They can be equipped with means of measuring and control of technological processes where an unified analogue direct current or voltage signal is an information bearer on their input and/or output. They can be used in heating, energy, gas, air-conditioning and other technological systems, which they are suitable for, regarding their features. They are connected with controlled devices with a flange according to ISO 5211 and a coupling or using a stand and a coupling/a lever.



It is forbidden to use EA as a lifting mechanism!

Switching of actuator by a semiconductor switches have to be consulted with producer.

1.2 Safety instructions



EA of MTR types are reserved technical devices with higher rate of danger, with possibility of installation in areas specially danger regarding casualties caused by electric current.

Product influence to environment

Electromagnetic compatibility (EMC): the product meets requirements of EC Executive Nr. 89/336/EEC and EN 50 081, Part 2.

Vibrations caused by the product: product influence is negligible

Noise produced by the product: during operation the noise level A at the service area can be at least 78 dB (A). Electric actuators are according to EN 61010-1+A2 assigned for installation category II (over voltage category).

Requirements for professional qualification of people performing installation, service and maintenance



Electric connection can be performed only by an acquainted person, i.e. an electrical engineer with professional education of electrical engineering at an apprentice school or a technical school (secondary, complete secondary or university education) and whose qualification was verified by an educational facility authorized to verify professional qualification.

Instructions for staff training

Service can be performed only by workers professionally qualified and trained by the producer or contracted service centre.

Warning for safety use

Product protection

EA **MTR** does not have own short-circuit protection, therefore there must be included suitable protective device into the supply power (circuit breaker, or fuse), which serves at the same time as main switch.

Type of equipment from a connection point of view: The equipment is designed for permanent connection.

1.3 Warranty conditions

The supplier is responsible for completeness of the delivery and guarantees these specifications of the product which are stated in Technical conditions (TP) or specifications agreed in the Contract.

The supplier is not responsible for any deterioration of parameters caused by the customer during storage, unauthorised installation or improper operation.

1.4 Under-guarantee and after-guarantee service

Our customers are provided with professional service of our firm in installation, operation, service, maintenance, revision and help in troubleshooting for all our products.

Trained professionals wait for you also in our contracted service centres.

Under-guarantee service is performed by the service department of the production plant, or by a contracted service centre according to a written claim.

In case of occurring of any fault please let us know it and state:

- type code
- serial number
- ambient parameters (temperature, humidity...)
- duty cycle including frequency of switching
- type of switching-off (position or torque)
- set switching-off torque
- type of fault - description of claimed fault
- it is recommended to place also Installation certificate.

It is recommended to have **after-guarantee service** performed by the service department of the production plant, or by a contracted service centre.

1.5 Operation conditions

Product location and operation position

EA can be installed and operated at sheltered areas of industrial plants without temperature and humidity regulation, protected against climate effects (e.g. direct sunshine). Installation and operation of EA is possible in **any position**.

Actuator installed on the open place **must be protected** against a direct climate effects by shelter. Actuator installed in the place with relative humidity over 80% and on the open place under shelter have to have permanently connected space heater without thermal switch.

1.6 Basic Specifications

CLIMATE GROUPS AND TYPES

According to standard IEC 60 721-2-1 electric actuators are delivered in the executions listed below:

1. "**standard**" for group climate **reduce** (R)+ meet for type climate warm temperate (WT) and in addition warm dry (WDr), much warm dry (MWDr) and extremely warm dry (EWDr) with temperature -25 till +55 °C

in addition in sense GOST 15 150- 69:

2. "**tropical**" meet for dry and dampy tropics, for types climate warm temperate (WT), warm dry (WDr), much warm dry (MWDr), extremely warm dry (EWDr), warm dampy (WDa) and warm dampy equal (WDaE) by your leave temperature -25 till +55 °C.

Category of location

- executions "**Standard**" and "**Tropical**" are intended for location **under the** shelter (category 2)

Atmosphere type

- executions "**Standard**" and "**Tropical**" are intended for location in atmosphere type II **industrial**.

(In accordance with ČSN/STN 33 2000-3, mod. IEC 60 364-3:1993)

the EA MTR 52 420 have to resist external effects and operate reliably:

In the conditions of the following types of environment:

- mild to hot dry with temperature in range -25°C to $+55^{\circ}\text{C}$ AA 7*
- with relative humidity 10 to 100 %, including the condensation of up to 0,028 kg water content per 1 kg of dry air at 27°C , with temperatures from -25°C up to $+55^{\circ}\text{C}$ AB 7*
- with height above sea level 2 000 m, with barometric pressure range 86 to 108 kPa AC 1*
- with spraying or jet water from all directions–(protection enclosure IP x5) AD 5*
- with mild dustiness – with potential influence of fireproof, non-conducting and explosion-proof dust; mean dust layer; dust fall above 35, but not more than 350 mg/m^2 per day (IP 5x) AE 5*
- with strong dustiness – with a possibility of influences of inflammable, non-conducted and non-explosive dust; the middle layer of dust; the dust drop more than 350 but not more than 1000 mg/m^2 per day (products with protection enclosure of IP 6x)..... AE 6*
- with atmospheric occurrence of corrosive and pollution media (with high degree of atmosphere corrosive aggressiveness); important presence of corrosive pollution..... AF 2*
- with a possibility of influences of mechanical stress:
 - medium sinusoid vibrations with frequency in range 10 up to 150 Hz, with shift amplitude of 0,15 mm for $f < f_p$ and acceleration amplitude $19,6\text{ m/s}^2$ for $f > f_p$; (transition frequency f_p is from 57 up to 62 Hz) AH 2*
 - medium impacts, shocks and vibrations AG 2*
- with serious danger of plants and moulds growing..... AK 2*
- with serious danger of animals occurrence (insects, birds, small animals) AL 2*
- with detrimental influence of radiation:
 - of stray current with intensity of magnetic field (direct and alternating of power supply frequency) AM 2*
to 400 A.m⁻¹
 - of sun radiation with intensity $> 500\text{ a} \leq 700\text{ W/m}^2$ AN 2*
- with effects of medium seismic activity with acceleration $> 300\text{ Gal} \leq 600\text{ Gal}$ AP 3*
- with indirect danger of storm activity AQ 2*
- with fast moving of air and strong winds AR 3 , AS 3*
- with qualified staff:
 - electricians according to §21, reg. 718/2002 of MPSvR (valid for SR)BA 4÷BA 5*
 - acquainted persons according to §5, reg. No. 50/1978 or 51/1978 (valid for CR) BA 4÷BA 5*
- with persons frequent touching earth potential (persons often touch conductive parts or they stand on the conductive basement) BC 3*
- without any danger media with object BE 1*

* marking according to IEC 60 364-3:1993

Power supply and duty cycle**Power supply:**

electric motor 230 V AC $\pm 10\%$

Power supply frequency 50 Hz or 60 Hz $\pm 2\%$

Note: At frequency of 60 Hz closing time is reduced by 1.2 times.

Duty cycle (according to EN 34-1, 8):

EA MTR 52 420 are designed for **remote control**:

- short-time operation S2-10 min

intermittent operation S4-25%, 6 up to 90 cycles per hour

1.7 Description of the actuator

The actuators MTR 52 420 (Fig.1, 9) consist of the following modules:

Module M1 – an electric motor

Module M3 – a gearbox with a manual control mechanism

Module M4 – a control box

Module M8 – a linear mechanism

Module M11 – a countershaft box

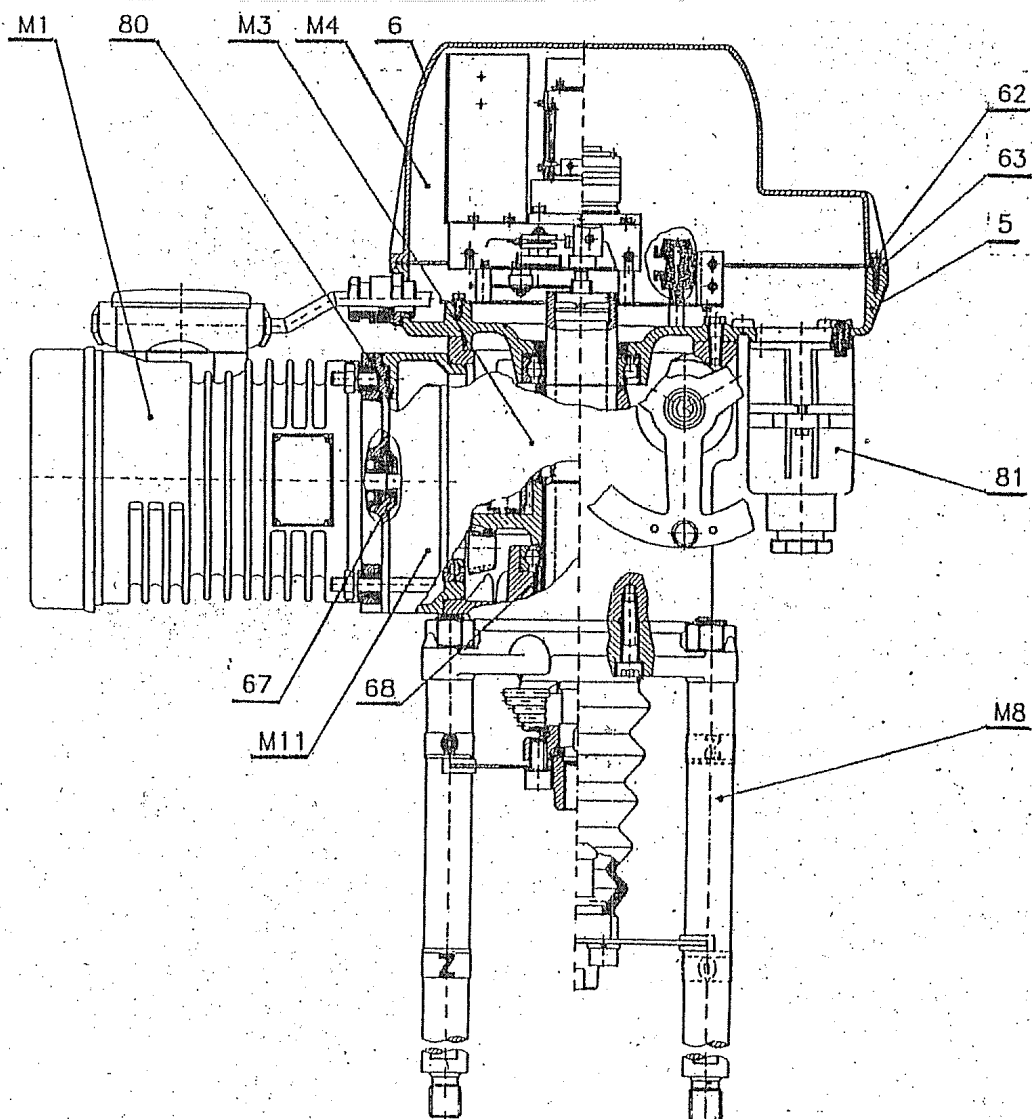


Fig.1

Module M1 – an electric motor

Special capacitor asynchronous electric motor with a electrically controlled friction brake. It is suitable for continuous control with possible operation as a permanent squirrel-cage motor.

Module M3 – a gearbox with a manual control mechanism (Fig.2)

The gear train is located in the case (1). The gear are placed on the output shaft (3) and they make up an independent assembly set. The rim (44) with internal teeth provides gearing between the pinion of the electrical motor and the output shaft. The worm (2) designed for torque taking down and manual control is seated in the upper part. The resetting is made with the handwheel (4). The worm is then sprung and the power caused by torque of the output moves the worm shaft axially against spring power. The movement of the worm is taking off by a fork and a pin through shaft (45) leading to the control box. The movement of the worm is a measured of torque. The fork meshes with the groove circumference to allow rotary movement of handwheel it means its rotary movement in every position.

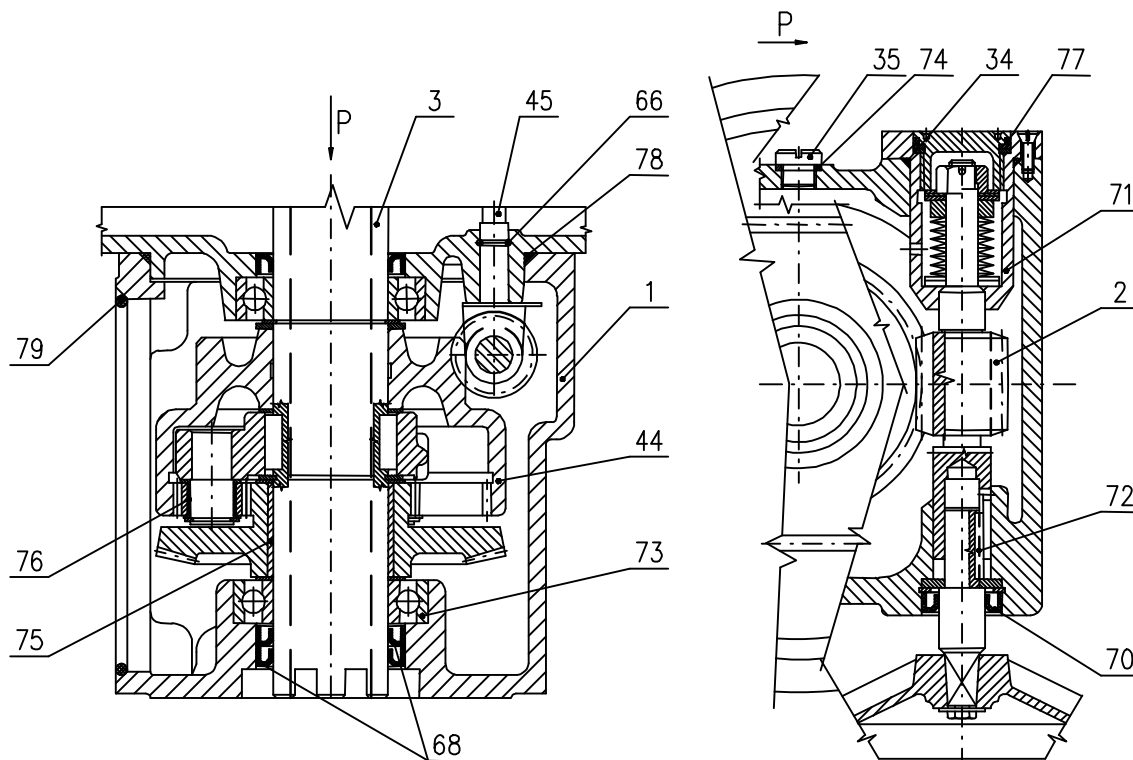


Fig.2

Module M4 – a control box

It is located in the upper of actuator. On the base plate (46) the following functional block are mounted:

- a torque switch unit (20)
- a position unit
- a transmission unit (10)
- space heater (16)

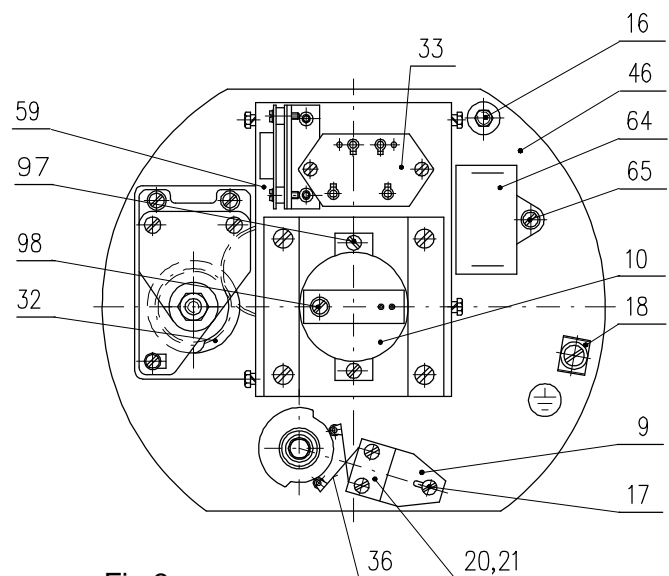


Fig.3

Position unit (Fig.5)

After loosening a nut of the position unit (51) cams (53), (54), (56) and (57) can be set. The design is solved the way that setting one cam the other are kept in their set position. After setting tighten the nut (51).

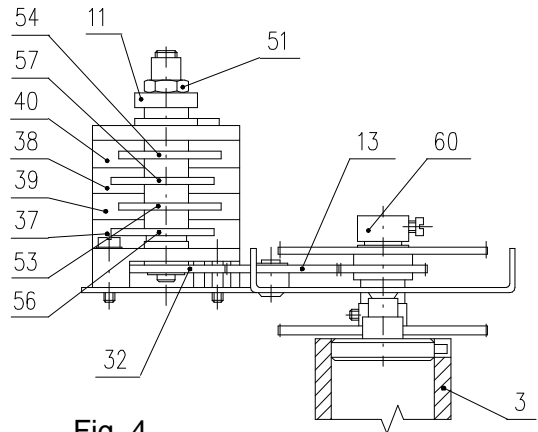


Fig. 4

Transmitter unit (Fig. 6)

The unit is derived from the gear unit. Gear wheels (43a), (43b), (43c) and (43d) and the transmitter joint (60) make up a module. Rotary movement from the gears to the transmitter is transferred via the clutch after tightening of the screw (50).

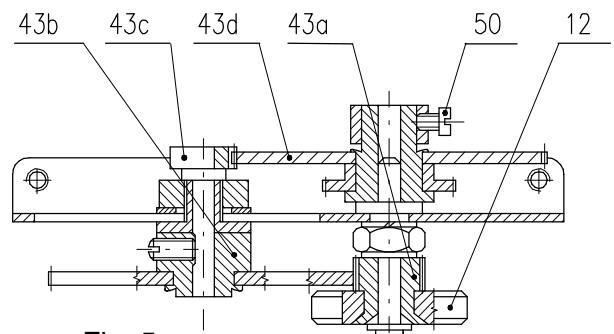


Fig. 5

Torque switch unit (Fig. 7) consists of the following parts:

Switch element (9) (Fig.3) is formed by two micro-switches S1 and S2. It is put into operation after loosening of the nut (17).

Cam unit is formed by two adjustable cams (19) and (20) (Fig.6) placed on the shaft of the torque control element (45) (Fig.2). The cams turned according to set switch-off force.

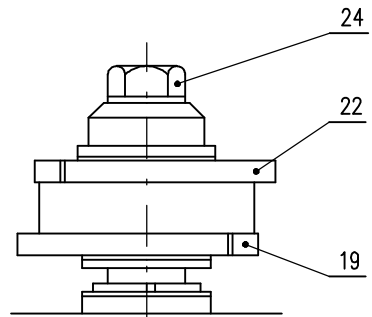


Fig. 6

Space heater

The actuator is equipped with two parallel space heaters (16) (Fig. 3) with total power output 20W. Connection of the space heaters is conditional by operation environment.

Electric connection

Can be made through the terminal board (58) (Fig.8) or through the connector (81) (Fig.2).

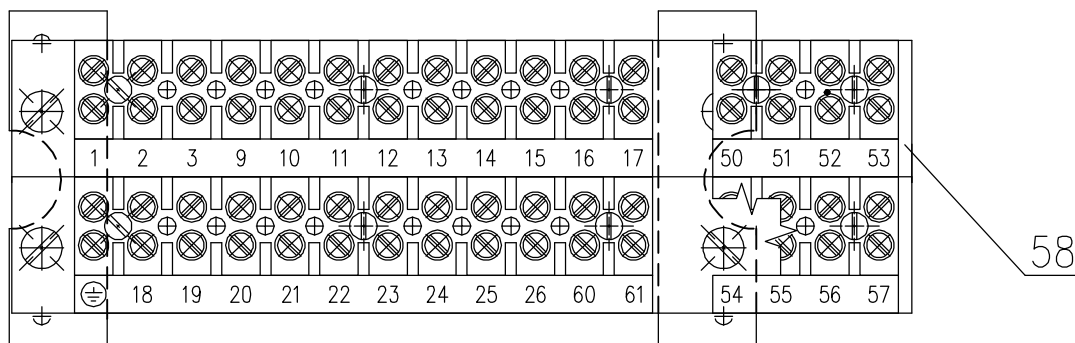


Fig.7

Module M8 – a linear mechanism

It changes rotary movement of the output shaft (3)(Fig.3) to linear movement of output spindle (83). The bronze joint nut with a trapezoidal thread is put into teeth of the output shaft (3). The frame (85) limits rotation of the output shaft(83) and function to indicate position. Pointers (86) "O" (open) or "Z" (closed) indicate position and they are fixed on actuators supporting columns(87).

Spindle's thread is protected against impurities with a collar (89). The upper position of the spindle "O" is limited by the stop tube (90).

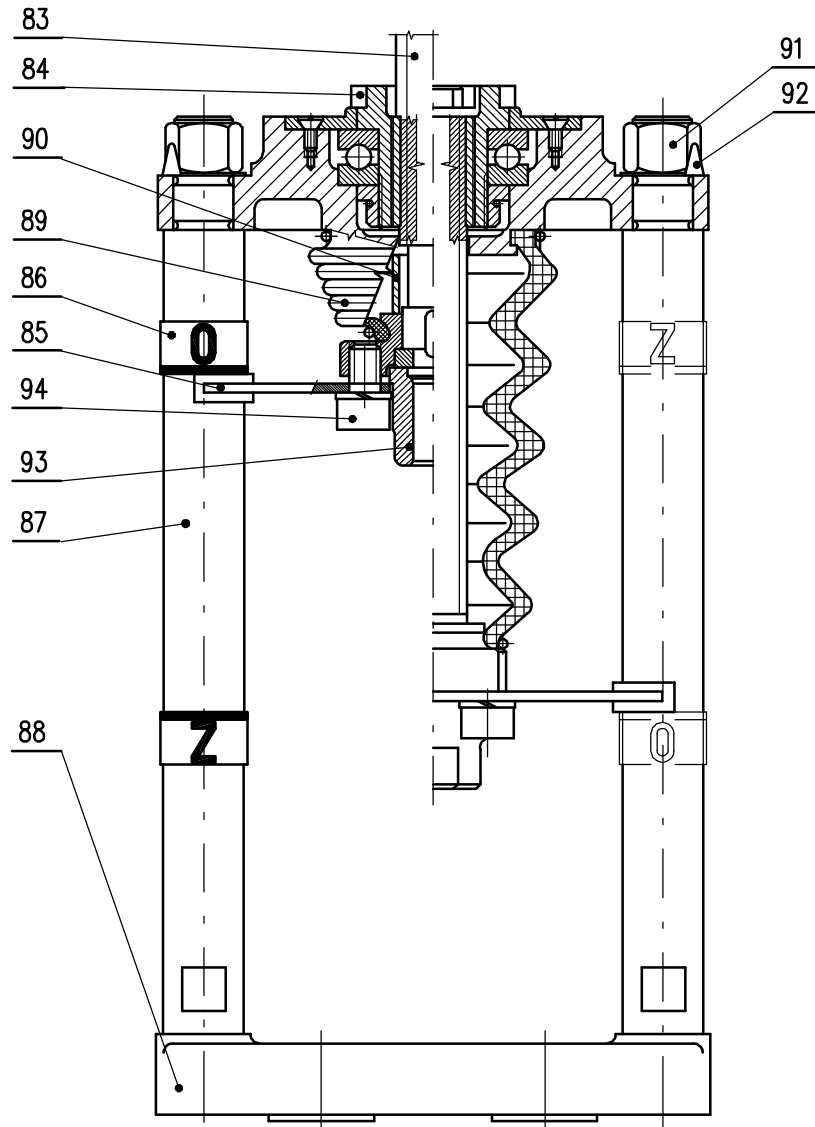


Fig. 8

Note:

While adjusting the actuator of the version with the ball screw do not exceed the lower position of the stem stated in the dimensional drawings P-1045b and P-1046b. In case of exceeding of the lower position the ball could fall out and the ball screw could be damaged. The ball screw is filled with the grease GLEIT- μ HP 520M.

1.8 Technical data of actuator

The basic technical data of actuator are given in the Table 1.

Table No. 1

Type/ type number	Screw version	Rated operating speed $\pm 10\%$ [mm/min]	Operat. stroke [mm]	Switching-off thrust ⁽⁵⁾⁽⁶⁾ $\pm 15\%$ [kN]	Weight [kg]	Electric motor				
						Voltage. [V] $\pm 10\%$	Power output [W]	Speed [1/min]	Current ⁽⁷⁾ [A]	
1	2	3	4	5	7	8	9	10	11	12
MTR Typ number 52 420	trapezoidal	32	12,5 - 100	4,0 – 6,3	cca 25 - 30	1-phase	230	16	1 150	0,31
		50		2,5 – 4,0						
		32		6,3 – 10,0				25	1 250	0,41
		50		4,0 – 6,3						
	Ball screw	32		10,0 – 16,0				16	1 150	0,31
		50		6,3 – 10,0						
		32		10,0 – 25,0				25	1 250	0,41
		50		10,0 – 16,0						
		63		6,3 – 10,0						
		100		4,0 – 6,3						

Notes:

⁵⁾ State the switching-off thrust in your order by words. If not stated it is adjusted to the maximum rate of the corresponding range.

⁶⁾ The maximum load thrust equals the max. switching-off thrust multiplied by:

- 0,8 for duty cycle S2-10 min, or S4-25%, 6-90 cycles per hour
- 0,6 for duty cycle S4-25%, 90-1200 cycles per hour

EA protection enclosure: **IP 55** (EN 60 529)
..... IP 65 (required to be confirmed by the producer)

Mechanical ruggedness:

sinusoidal vibrations: with frequency in range 10 to 150 Hz,
with shift amplitude of 0,15 mm for $f < f_p$,
with acceleration amplitude of 19,6 m/s² for $f > f_p$,
(transition frequency $f_p = 57$ to 62 Hz)

drop resistance: 300 drops with acceleration 2 m.s⁻²

seismic resistance: amplitude of the shock off 6 on Richter scale

Self-locking: garranged in range from 0% up to 100% of max. rated thrust

..... Switch-off thrust in linear mechanism with trapeze thread

..... Unguaranteed in linear mechanism with ball screw

Switching-off:

Switching-off voltage max. 250V, 50/60 Hz, 2A or 250V DC; 0.1A

Manual control: with handwheel;

rotating clockwise (counter-clockwise) EA output part is moving in direction "Z" ("O")

Electric control:

remote control (output motion of actuator is operated by power supply voltage)

Output part backlash: max. 0,25 mm at load of 5% of maximum thrust

Space heater (E1)

Space heater power output: cca 20 W

Adjustment of limit positions:

Position switch S3 or S4 is adjusted to specified stroke.

Limit position switches are adjusted with accuracy $\pm 0,5$ mm referring to lower position and stroke.

Setting of thrust switches

Switching thrust is set to the rated thrust with tolerance of $\pm 15\%$.

Grease:

- grease oil PP 80
- gear part - grease GLEIT - μ HF 401/0 or GLEITMO 585 K
- linear adapter – grease GLEIT- μ HP 520M

Mechanical connection:

- flange (ISO 5211)
- pillars

Basic and connecting dimensions are given in dimensional drawings

Electric connection**a) terminal board**

to terminal board (X):max. 2 cable glands M25x1,5 mm

to connector (XC):cable glands M20x1,5 a M25x1,5

b) electric motor

terminal board execute2 cable glands M25x1,5

protection terminal:

external and internal, mutually connected and marked with protection earthing mark

Electric connection - according to wiring diagrams

1.9 Packing, transport, storing and unpacking

Surfaces without surface treatment are treated by conservation preparation MOGUL LV 2-3 before packaging .

Conservation is not necessary if the following storage conditions are complied with:

- Storage temperature: -10 to +50 °C
- Relative air humidity max.80 %
- Electric actuators and their accessories must be stored in dry, well ventilated covered spaces, protected against impurities, dust, soil humidity (by placement to racks, or on palletes), chemicals and foreign interventions
- There shall be no corrosive gases present in the storage areas.

The **EA** are delivered in solid packages guaranteeing resistance in accordance with IEC 60 654-1 and IEC 60 654-3. Package is a box. Products in boxes is possible to load on the pallets (pallet is returnable). On the outer side of the package is stated:

- manufacturer label,
- name and type of product,
- number of pieces,
- other data – notices and stickers.

The forwarder is obliged to secure packed products, loaded on transportation means, against self-motion; if open transportation means are used, to secure their protection against atmospheric precipitations and splashing water. Displacement and securing of products in transportation means must provide their stable position, exclude the possibility of their inter-collision and their collision with the vehicle walls.



They can be transported in unheated and not airtight areas of transport means with effects in range:
 temperature: -25°C up to +70°C (a strange version – 45 ° C up to + 45 ° C)
 humidity: 5 up to 100%, with maximal content of water 0.029 kg/kg per kg of dry air
 barometric pressure: 86kPa up to 108kPa

After receiving EA check whether during transport or storage the actuator was not damaged. Compare also whether the parameters on their nameplates are in accordance with accompanying documentation or the Contract. If any discrepancy or fault occur inform immediately your supplier.

If the actuators and accessories are not immediately installed, they have to be stored in dry, well-ventilated sheltered roos, protected against dirt, dust, soil humidity (with placing onto shelves or onto

pallets), chemical impacts and encroachment, at ambient temperature from -10°C up to +50 °C and relative humidity max. 80 %.

Warning:

1. *It is not acceptable to store EA outdoors, or in areas not protected against direct climate influence!*
2. *It is not recommended to set up the electric actuator manually without mechanic connection with armature.
The electric actuator does not have mechanic restriction of working stroke in terminal positions and therefore can after exceeding of the stroke come to mistuning of parameters set up by production plant.*
3. *Eventual damages to surface finish remove without delay – thus preventing damage by corrosion.*
4. *If storing takes longer than 1 year, it is necessary to inspect lubrication fillings before putting EA into operation.*
5. *Assembled EA, but not put into operation is necessary to protect by the equivalent method as during storage (for example suitable protective cover).*
6. *After assembly to the armature in free and wet areas, or in areas with temperature changes, connect without delay heating resistor – thus preventing damages caused by corrosion from liquefied water in the control area.*
7. *Excessive preserving grease remove just before putting EA into operation.*

1.10 Product and package liquidation

The product and its package are made of recycling materials. Do not throw the single parts of the package and of the product after their life but sort them according to instructions in corresponding executives or regulations of environment protection, and allow their recycling.

The product and its packing are not a source of any environment pollution or contamination and do not contain any dangerous waste.

2. Installation and dismantling of actuator

2.1 Installation



Abide by safety measures!

Before starting of mounting the EA onto the valve:

- Check again whether the EA was not damaged during storing.
- Check whether the adjusted operation angle and connecting dimensions of the actuator (see the nameplate) are in compliance with the valve parameters.
- In case of inconsonance, perform adjusting according to the part Adjustment.

2.1.1 Mechanical connection EA on the valve

EA is by the producer adjusted to parameters according to the nameplate, with connecting dimensions according to the corresponding dimensional drawing and put it to a mid-position.

Before installation put the handwheel on.

The EA have to be set on the valve in the height enough to have the spindle in the position "closed" (the spindle pulled out of the actuator) with an accuracy $\pm 1\text{mm}$.

Column version:

The columns of the actuators (87) are in the upper part locked with a nut (91) and with a locking O-ring (92). After unlocking the columns (87) can be screwed into a valve yoke with a wrench OK 22 sat on the column surface (Fig. 8)

Flange version – connection with the bolts:

Actuators with the flange (88) are to be connected with valves using bolts and fixing them with nuts M12.

Flange version – connection with the central nut (Fig.9):

Seat the actuator with the flange (88) onto the guarding cylinder part of the valve and fix it by the central nut. The central nut is not an object of standard delivery.

The coupling (93) joins the actuator's spindle with the valve's one. It is free to rotate after loosening the fixing screws of the yoke (94).

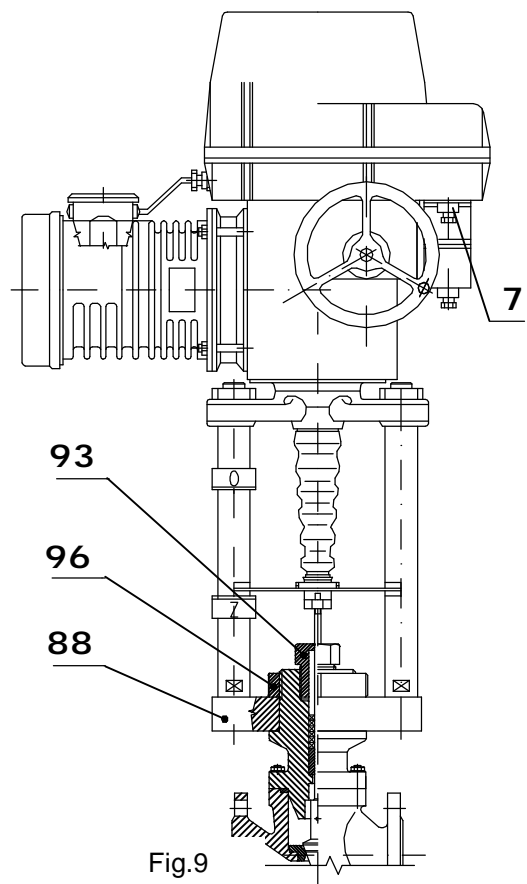


Fig.9

2.1.2 Electric connection and checking of function



1. Follow instructions in the part "Requirements for professional qualification"!
2. While laying electrical line abide by the instructions for heavy current installations.
3. Cables to terminal boards or connectors lead through screw cable glands.
4. Before initiation ES into operation internal and external protection terminals are needed to be connected.

a) Terminal board connection

Connecting of the motor. Electric connection should be made through 2 cable glands P16x10. The recommended diameter of the connecting cable is 7,5 up to 10 mm. Excitation winding, control winding and capacitor have to be connected in accordance with the recommended motor wiring diagram Z-296.

Control device connection. The control device connection has to be done through 2 cable glands M25x1,5 onto the terminal board with terminal size 2,5mm². The total number of terminals is max. 32. They are marked with numbers corresponding with the wiring diagram placed in the cover. Diameter of the connecting cable is 12,5 up to 19 mm.

b) Connector connection

Electric connection has to be made through M 20x1,5 and M 25x1,5 cable glands.

Notes:

1. The EA are delivered with cable glands, which in case of tight putting on the leads assure protection enclosure up to IP 68. For required protection enclosure it is needed to use rings according to the actual cable diameter.
2. While fixing the cable it is needed to count with allowed bend radius to avoid damaging or deformation of the sealing element of the bushing. The leads are to be fixed with the solid construction at most 150 mm from the cable glands.
3. It is recommended to use screened cables to connect remote transmitters.
4. The face areas of the control part cover have to be before re-mounting clean, coated with a grease without any acid (e.g. vaseline) and sealing not damaged to avoid joint corrosion.
5. Reversation of the EA is sure, if the period between switching-off and switching-on of power supply for the reversed movement of the output part is minimally 50 ms.
6. Delay after switching-off, i.e. time since a reaction of switches till the motor is dead can be maximally 20 ms.

After electric connection it is recommended:

Check movement direction. Set actuator with the handwheel to a midposition . Check the wiring pressing the button "closing" (on the manual control box as well as on the board, the test button box). The output spindle is to be moving down. If not check wiring of the el. motor and the control part.

Check to torque switches. Set actuator to have it moving in the direction "closing" and switch the switches for "torque switching-off". The n switch contacts of the S2 (S1) from the position 1-3 to the position 1-2 by pressing the switch button. In case of the correct wiring the actuator will stop. If the torque switch are switched for "indication" just indication on the control box of the board will occur. Repeat the check analogically also the direction "opening" by switching the contacts of the S1 (20) switch from the position 1-3 to the position 1-2. If any of the functions is not correct, check wiring of the switches in accordance with the wiring diagram.

Check of positional switches. Set the actuator to have it moving in the direction "closing" and switch contacts of the S4 (39) or S6 (40) switches from the position 1-3 to the position 1-2 by pressing the corresponding switching-off pin (36). In case of correct wiring the actuator will stop after switching the contacts of the S4 switch and indication will turn-on after switching the S6 switches. Repeat the check also for the direction "opening". Press the switching-off pin of the S3 (37) or S5 (38) from the position 1-3 to the position 1-2, The actuator will stop or indicate. If any of the functions is not correct check wiring of the switches in the actuator in accordance with the wiring diagram.

2.2 Dismantling



**Before dismantling it is required to disconnect the EA from mains!
Do not connect and disconnect live connectors!**

- Disconnect the EA from mains phases.
- Disconnect the leads from the EA terminal boards and loosen the cables from cable glands. In connector version disconnect the connector.
- Loosen the fixing screws of the EA flange and of the coupling and disconnect the EA from the valve.

3. Adjusting of actuator



Abide by safety measures!

The adjustment can be performed at a mechanically and electrically connected EA. This part describes adjustment of EA to specified parameters in case that any unit of EA is reset.

Laying of adjusters of the control board is shown on Fig.1.

Adjustment can be made only with special service box with dividing transformer. The service box is to be connected with the terminal board of the actuator with lead cables disconnected from the control system.

If it is needed to set the actuator to other parameters than it is set in the plant, follow these steps:

3.1 Adjustment of stroke

In the plant the actuator are set only on fixed stroke in accordance with the specification table. The set operation stroke is given on the type label. Resetting is allowed only in the plant or in any of contracted service firms.

3.2 Adjustment of position unit (Fig.4)

The position unit is in the plant set with limiting of the operation stroke in accordance with the dimensional drawing. The starting position is defined as the lower position, it means "closed". Up of this position the set stroke of the actuator can be measured. The lower position of the stroke is in accordance with the dimensional drawing as well as whole stroke set with a tolerance of ± 1 mm. The indication switches are set next to the position switches. Fine adjustment of the position and indication switches in the end positions can be made as follows:

Set the actuator to the position "closed". Loosed the switching-off cam(53) from the nut(51) and turn it clockwise until it meets the switching-off pin (36). The pin then will switch the S4 switch (39). The S6 signalling switch (40) is also adjusted by turning the switching-off cam (54) clockwise. Fix the switching-off cams by tightening the nut (51). Then reset the actuator to the position "open" Adjust S3(37) and S5(38) switches the same way as the S4 and S6 are adjusted but in the position "open" the switching-off cams(56) and (57) are to be turned counterclockwise. The S5 and S6 signalling switches are recommended to be adjusted to indicate next to the end positions.

Note:

While adjusting the actuator with the valve do not exceed the lower position of the stem stated in the dimensional drawings P-1045b and P-1046b. In case of exceeding of the lower position the ball could fall out and the ball screw could be damaged.

3.3 Transmitter unit adjustment

3.3.1 Adjustment of resistive transmitter unit

Driving force is transferred to the transmitter through a friction clutch after tightening of the nut (50) and that is why no special gear unit adjustment is necessary. Having the nut (50) loosened the drive of the transmitter is disconnected and on the other hand after tightening it is connected. The transmitter itself is equipped with fixed stop ends preventing it against a damage. After an impact to the stop end transmitter shaft it will slip in the friction clutch.

3.3.2 Adjustment of capacitive transmitter unit

The force from the gears is led through the friction brake after tightening of the screw (50), and that is why no special adjustment of the transmitter unit is necessary. Loosen the screw (50) to disconnect the transmitter drive, and tighten it to connect the drive.

The output signals from the capacitive transmitter 4-20mA or 20-4 mA is set in relation with the stroke the end position switches with tolerance of $\pm 1\%$ of max. value.

Fine adjustment of the output signals (4mA – position “closed”, 20mA position “open” can be made following these steps (Fig.4)):

- Connect a digital amperemeter into the capacitive transmitter circuit.
- Set the actuator to the position “closed”
- Loosen the fixing screws (97) on the transmitter holder.
- Rotate the transmitter in both directions to adjust the signal 4mA finely.
- Tighten the screws (97)
- Set the actuator to the position “open”.
- Adjust the signal 20mA finely with the potentiometer (98).

3.3.3 Torque unit adjustment (Fig.7)

Setting of switching-off force can be done only in connection with a device for thrust measurement in the range 4-25kN by turning the cams (19) and (22).

4. Service, maintenance and troubleshooting

4.1 Service



1. In general it is provided that service of the EA is performed by a qualified worker in accordance with requirement given in Chapter 1!
2. After putting the EA into operation it is needed to verify whether during manipulation any scratch on surface occurred, it is to be removed to prevent actuator against corrosion!

Service of the linear actuators is consequent to operation conditions and it is normally reduced to

Giving impulses to the functional tasks. In case of mains failures reset a controlled body with the handwheel. If the actuator is a part of an automotive loop it is recommended to locate members for manual remote control in the loop to allow control of the actuator also in case of an automotive system failure. Operators take care to provide enough maintenance to prevent the actuator against damaging ambient and weather influences not stated in the part “Operation conditions and regulations”.

Operation with crossing the operation axial force is not allowed. The torque switches set to the maximal values of switch-off forces check the critical load of the actuator and that is why they should be connected with the automotive control circuits.

The maximal axial force is measured on the position controller, at the motor run to the short-circuit status, at power supply of 230V AC. This operation status can occur in case that the torque switches are not connected with the automotive control circuits. Normal operation to the short-circuit status is not allowed, because the actuator can cope only with limited number of the short-circuit load situations.

4.2 Maintenance - extent and periodicity

Exchange oil after 500 hours of actuator's operation. Check oil every quarter of year. The oil level is to reach the filling hole. The actuator is to be filled with the gear oil PP80. To fill the actuator up is needed 1,6 l of the oil. Once a half of year it is needed to rub teeth of gearing of the control box and bearings where the gearings are set. To lubricate use the grease GLEITμ .



Greasing of the valve spindle is independent on maintenance of the EA!

Every 6 months it is recommended to perform a check run in frame of adjusted operating stroke to verify function reliability, with back adjustment of original position.

After 6 months and once a year it is recommended to check tightening of fixing screws between the EA and the valve/gearing.

4.3 Troubleshooting

At failure of power supply the EA stops in the position where it was before the failure. If needed the EA can be set only with the manual control (the handwheel). After restoration of power the EA is prepared for operation.

In case of failure of any element of the EA it can be changed by a new one. Entrust the change to a service centre.

In case of an EA failure, which cannot be eliminated directly in operation, follow instructions for under-guaranty and after-guaranty service.

Note:

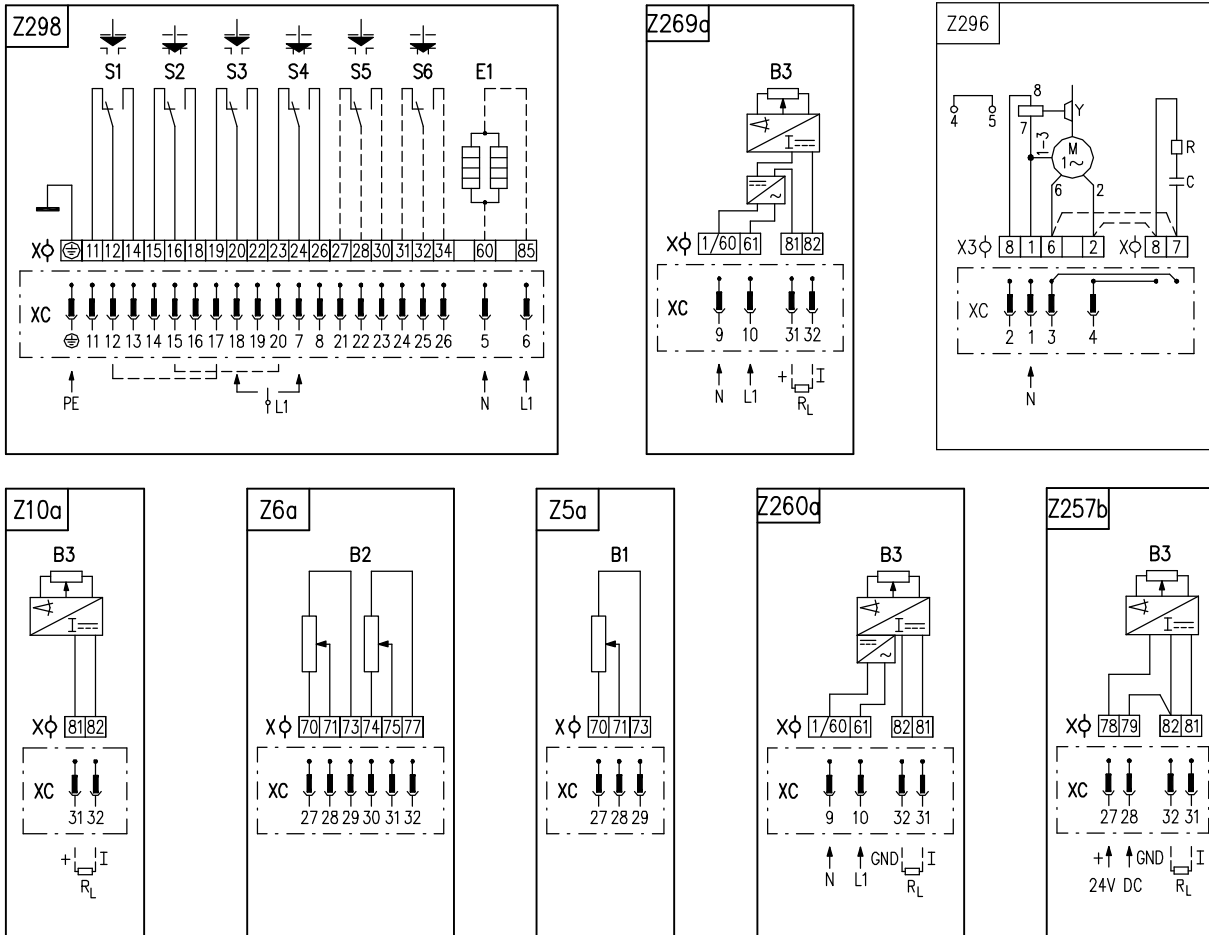
If the EA requires dismantling follow the chapter "Dismantling".



Taking the EA to pieces for repair purposes is allowed only by professionally qualified persons trained in the production plant or by a contracted service centre!

5. Enclosures

5.1 Wiring Diagrams



Notes:

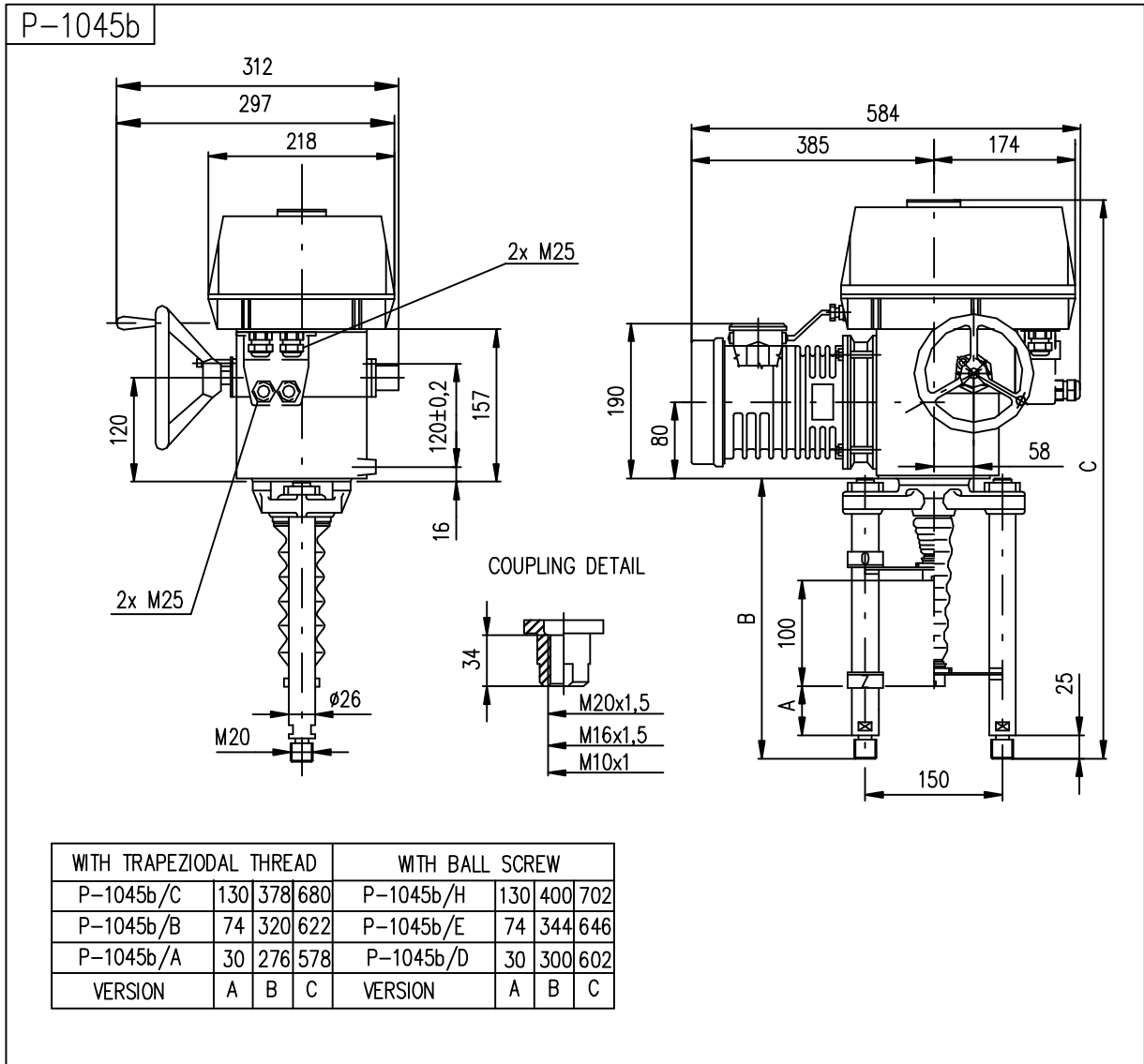
1. For the EA version with connection to the terminal board, the terminal 1/60(the wiring diagrams Z269a and Z260a) is leaded out to the terminal No.1
2. For the EA version with connection to the terminal board the actuator is not equipped by the jumper X3:6-X:7 and X3:2-X:8 (Z296) from manufacturing plant (it is necessary to connect it by customer).

Legend:

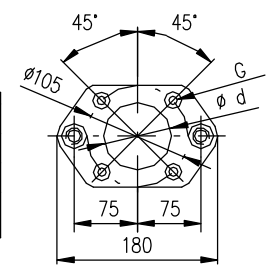
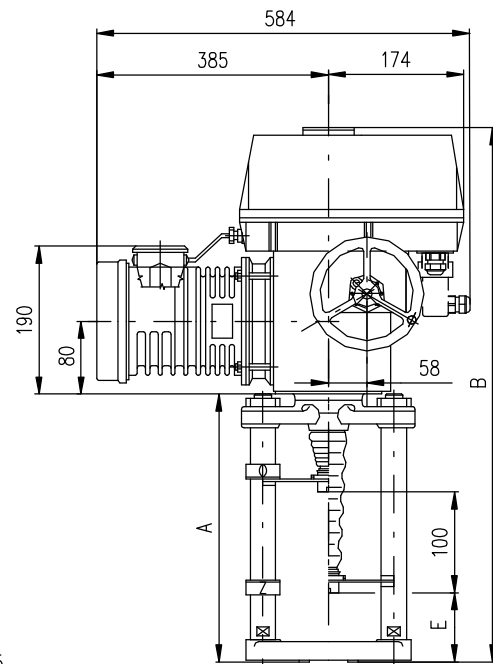
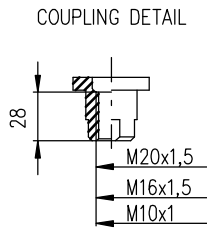
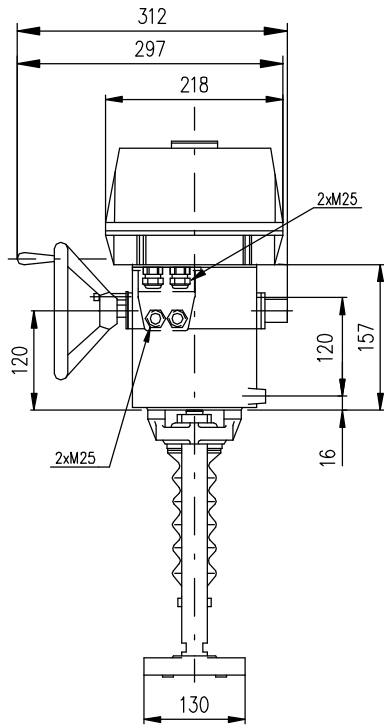
- Z5a connection of single resistive transmitter
- Z6a.....connection of double resistive transmitter
- Z10a.....connection of resistive with current converter or capacitive transmitter – 2-wire without supply
- Z257b.....connection of resistive transmitter with current converter – 3-wire without power supply
- Z260a.....connection of resistive transmitter with current converter – 3-wire with power supply
- Z269a.....connection of resistive with current converter or capacitive transmitter – 2-wire with supply
- Z296.....connection of 1-phase electric motor
- Z298.....connection of thrust and position switches and space heater

- | | |
|---|---|
| B1..... resistive transmitter (potentiometer)single | M..... electric motor |
| B2..... resistive transmitter (potentiometer)double | C..... capacitor |
| B3..... capacitive transmitter | Y..... motor's brake |
| S1..... torque switch "open" | E1..... space heater |
| S2..... torque switch "closed" | X..... terminal board |
| S3..... position switch "open" | X3..... electric motor's terminal board |
| S4..... position switch "closed" | I/U..... input (output) current (voltage) signals |
| S5..... additional position switch "open" | R..... reducing resistor |
| S6..... additional position switch "closed" | R _L loading resistor |

5.2 Dimensional Drawings



P-1046b



WITH TRAPEZIODAL THREAD						WITH BALL SCREW					
P-1046b/B	327	656	65,15 H7	110	-	P-1046b/D	349	678	65,15 H7	110	-
P-1046b/A			80 H8	112	4xØ13	P-1046b/C			80 H8	112	4xØ13
VERSION	A	B	d	E	G	VERSION	A	B	d	E	G