



- 220 V AC
 -
 - 2
 -
 -
 -
 -
 - IP 65
- ISO 5211

SP 0.1

	331.	x	-	x	x	x	x	x	/	x	x
--	------	---	---	---	---	---	---	---	---	---	---

3.1	o	e	10)	↓	
		-25°C ... +55°C	C3	IP 65	0
		-25°C ... +55°C	C3	IP 67	1
		-25°C ... +55°C	C3	IP 68 ¹¹⁾	5
B2	+	-25°C ... +55°C	C4	IP 67	2
2		-25°C ... +55°C	C3	IP 67	6
1	-	-25°C ÷ +55°C	C4	IP 67	7

	230 V AC	Z19a	0
	220 V AC		L
	24 V AC		3
	230 V AC	Z19a	5
	220 V AC		P
	24 V AC		8

33)				↓
16 Nm	(10 Nm) ³⁰⁾	10 s/90°	7.3 W	A
20 Nm			7.3 W	B
32 Nm		20 s/90°	7.3 W	C
		40 s/90°	4.7 W	D
		80 s/90°	2.75 W	F
50 Nm ³¹⁾		40 s/90°	7.3 W	J
		60 s/90°	4.7 W	K
		120 s/90°	2.75 W	M

	41)		↓
		60°	A
		90°	B
		120°	C
		360°	D
42)		90°	F

	-	-	-	-	A
		-	1 x 100 W	Z5a	B
		-	1 x 2 000 W		F
		-	2 x 100 W	Z6a	K
		-	2 x 2 000 W		P
		2-	4 - 20 mA	Z10a	S
		3-	0 - 20 mA	Z257a	T
			4 - 20 mA		V
			0 - 5 mA		Y
		2-	4 - 20 mA	Z269a	Q
		3-	0 - 20 mA	Z260a	U
			4 - 20 mA		W
			0 - 5 mA		Z
CPT		2-	4 - 20 mA	Z10a	I
				Z269a	J

331. x - x x x x x / x x

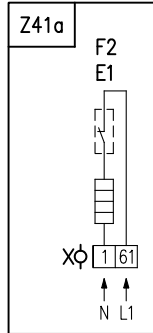
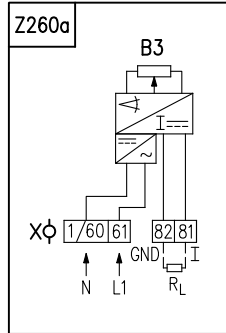
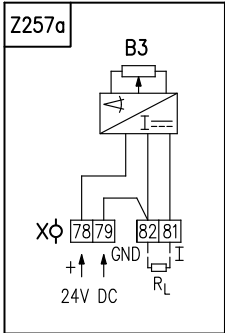
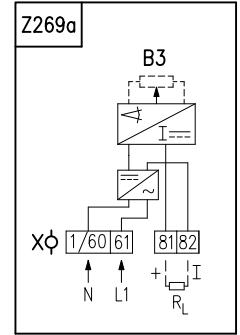
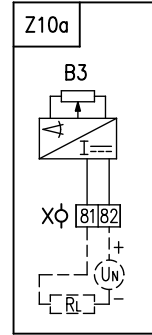
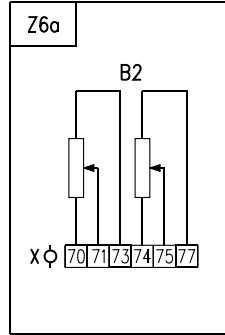
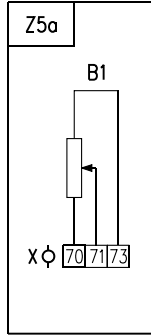
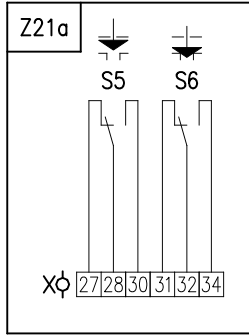
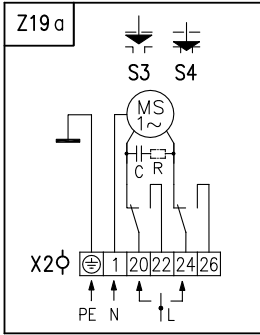
			ISO		
ISO 5211	F03 ⁶¹⁾	D-9	9x9	P-1234a	A
		L-9	9x9		1
		H-9	9x14		B
		SL-11	11x11		C
	F04	H-8	8x13		D
		D-11	11x11		E
		L-11	11x11		2
		H-11	11x18		F
		SL-11	11x11		G
	F05	SV-22	Ø22		H
		D-11	11x11		3
		L-11	11x11		4
		D-14	14x14		J
		L-14	14x14		5
	(ISO 5211)	F07	SL-11		11x11
SV-22			Ø22	L	
H-14			14x18	N	
V-12			Ø12	6	
D-14			14x14	I	
L-14			14x14	7	
+ ⁶¹⁾	+ V 160 ⁶¹⁾	H-14	14x18	P-1235a/A	M
		H-8	8x13		P
		V-16	Ø16		8
		V-20	Ø20		9
		-	-		R
		-	-		S
		-	-		T
+ V 360	, ,	-	-	P-1235a/B, P-0210	U
		SL-11	11x11		V
		SV-22	Ø22	P-1235a/C	W

A		70)	-	0	0
B		71)	-	0	1
C	2		Z21a	0	2
D			Z41a	0	3
E			Z41a	0	4
H		e .	-	4	0

A+C=10, A+D=11, B+C=12, B+D=13, A+C+D=14, B+C+D=15, C+D=16, A+E=17, B+E=18, A+C+E=19, B+C+E=20, C+E=21

10) : ISO 9223 / EN ISO 12944-2.
 11) IP 68 - 10 / 48
 30)
 31) 50 Nm
 33) A, 1, B, C, R, S.
 S2-10 min, S4-25%, 6-90 / 0.8
 S4-25%, 90 - 1200 (331.x-xxx x) / 0°
 41) 32 Nm.
 42)
 61) () ()
 70)
 71) ()

SP 0.1



1x M20x1,5 : 23 : . 2,5 mm², 3 :
 2x M16x1,5 : 8 14,5 mm
 : 6 10,5 mm

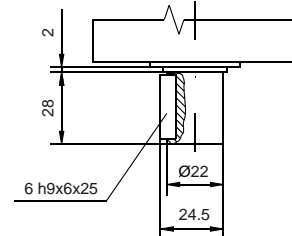
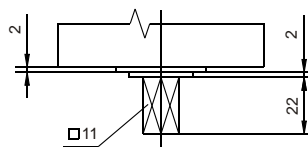
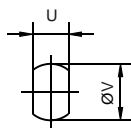
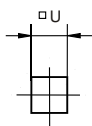
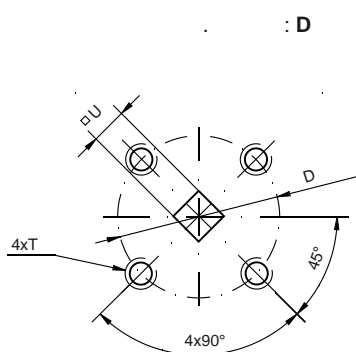
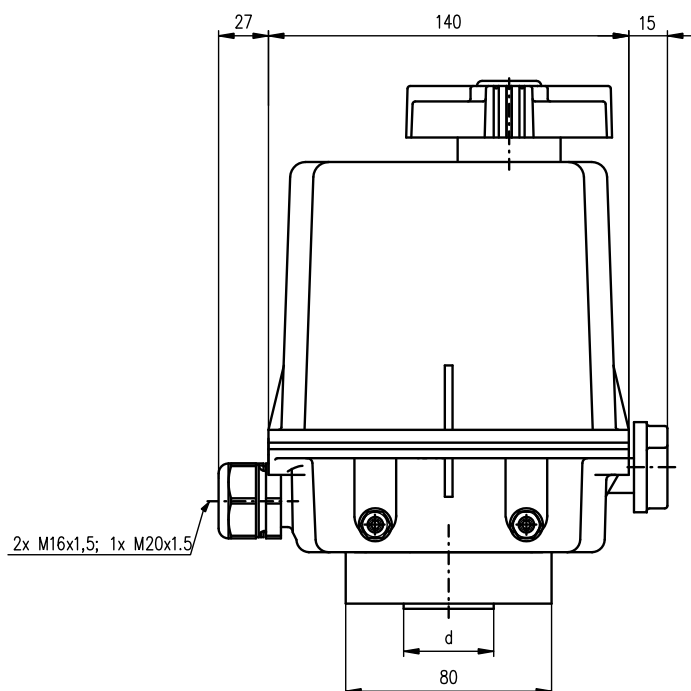
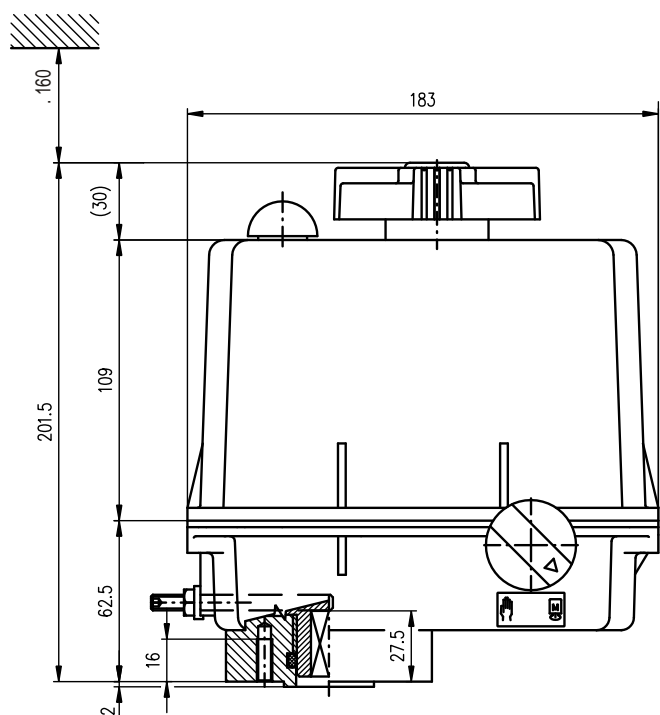
1. : 23, :
 2. : 24 VAC : PE.
 3. : :

Z5a c
 Z6a
 Z10a
 Z19a
 Z21a
 Z41a
 Z257a - 3-
 Z260a - 3-
 Z269a - 2-

B1 p
 B2 p
 B3
 C
 E1
 F2
 I
 MS
 R
 RL
 S3 " "
 S4 " "
 S5 " "
 S6 " "
 X, X2.....

CPT - 2-

SP 0.1



: D

: L

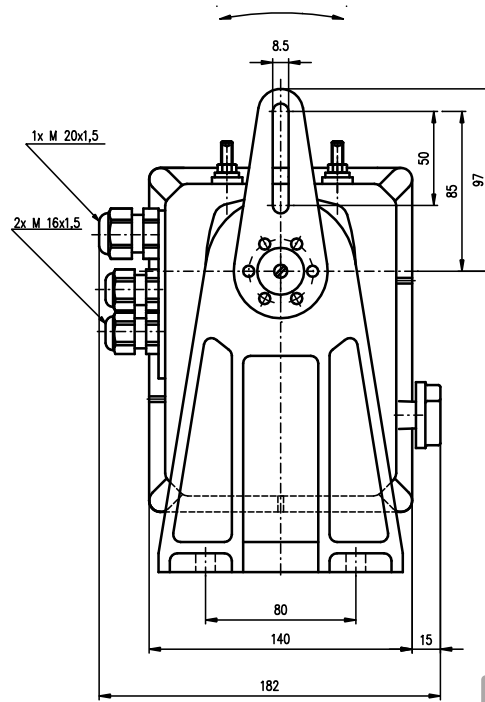
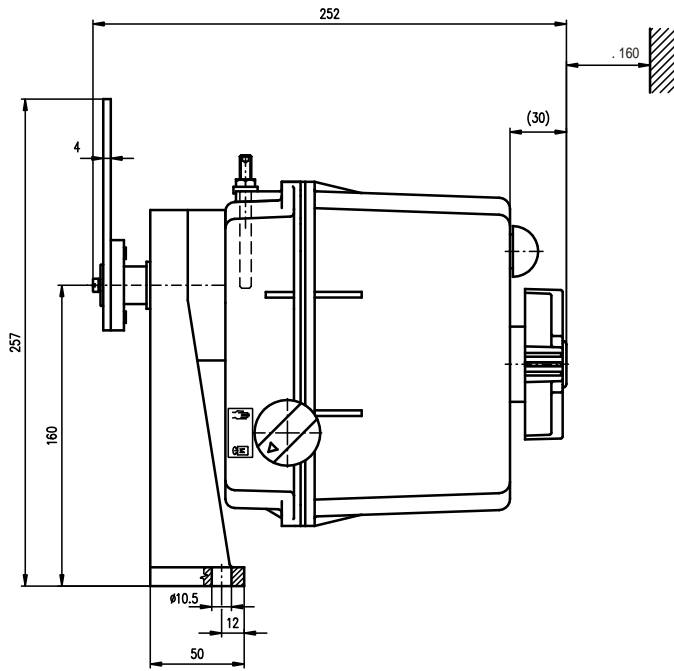
: SL

: SV

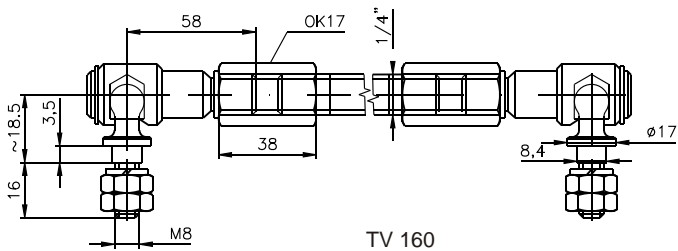
: H

F05	50	35	M6	14	18	D, L, H, SV
F05	50	35	M6	11	-	D, L, SL
F04	42	30	M5	8	13	H
F04	42	30	M5	11	18	D, L, H, SL, SV
F03	36	25	M5	9	14	D, H, SL
	ØD	Ød	T	U	ØV	

P - 1234a

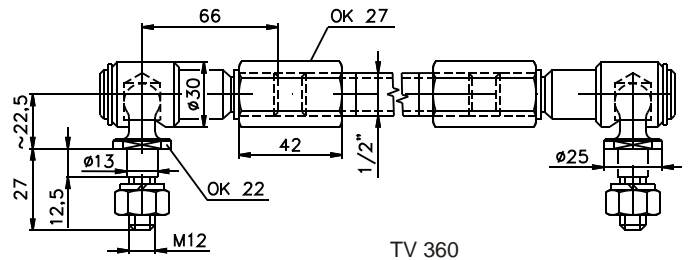


P - 1235a/A



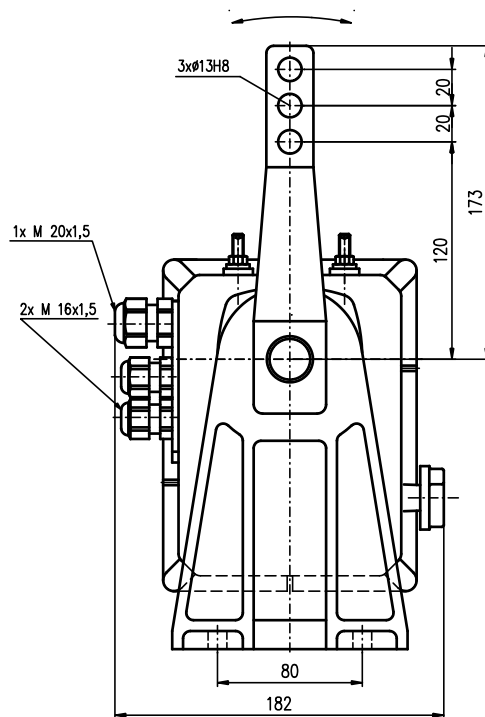
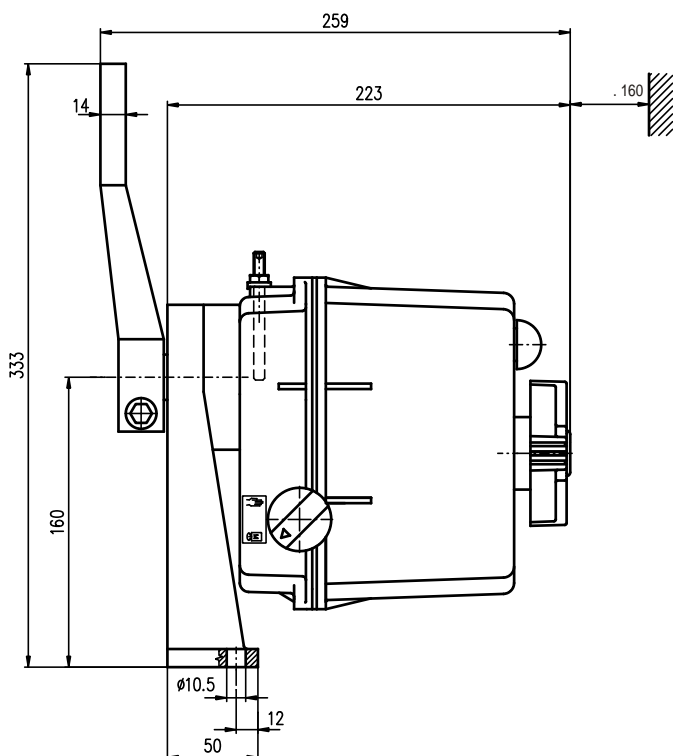
TV 160

P - 0100

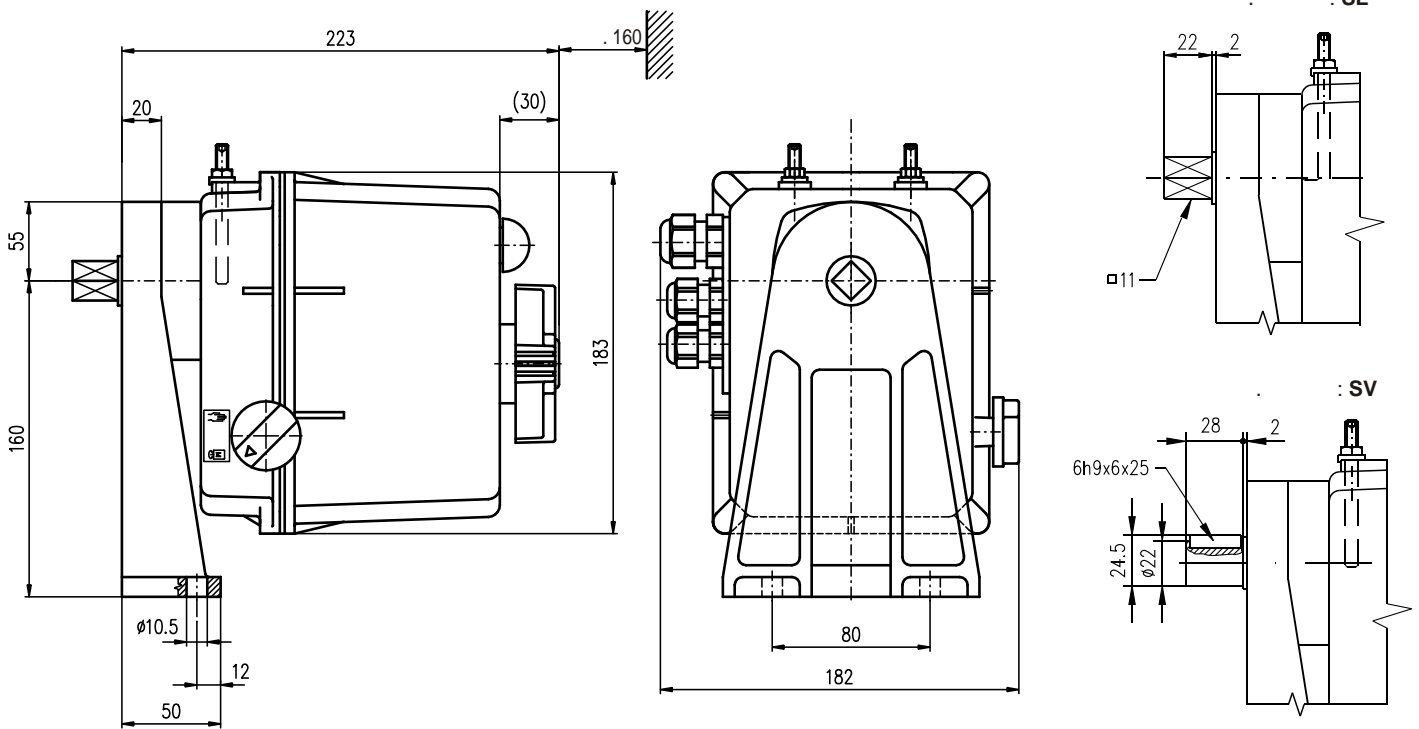


TV 360

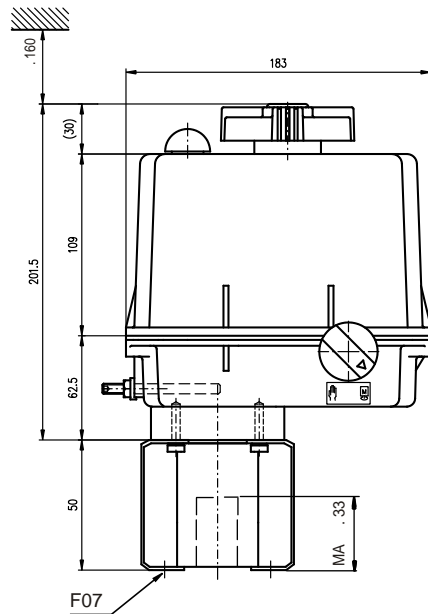
P - 0210



P - 1235a/B



P - 1235a/C



D-xx		L-xx		H-xx			V-xx			
ISO		ISO		ISO			ISO			
D-xx	U	L-xx	U	H-xx	U	V	V-xx	W	Z	X
D-14	14	L-14	14	H-14	14	18	V-12	12	13.6	4
				H-8	8	13	V-16	16	18.1	5
							V-20	20	22.5	6

P - 1493